

---

# **Chapter 6 Blood and Hemopoiesis**

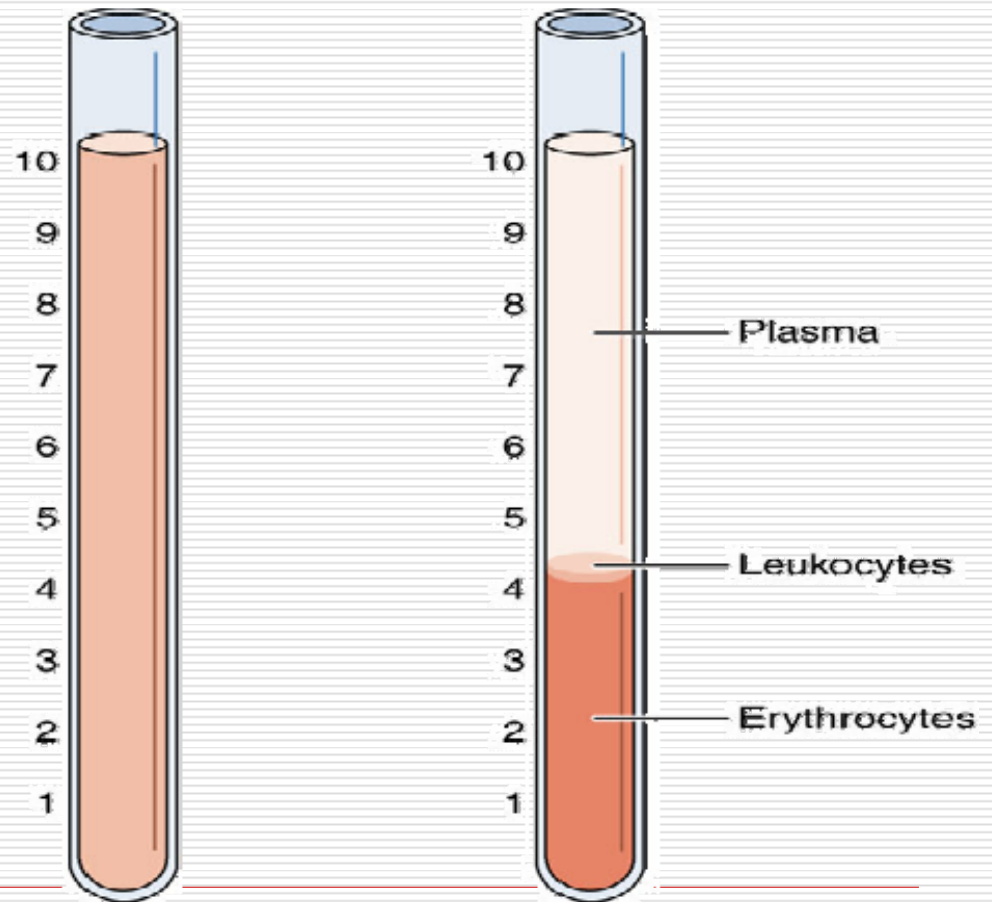
**Liu Jiamei**

---

# I . Blood

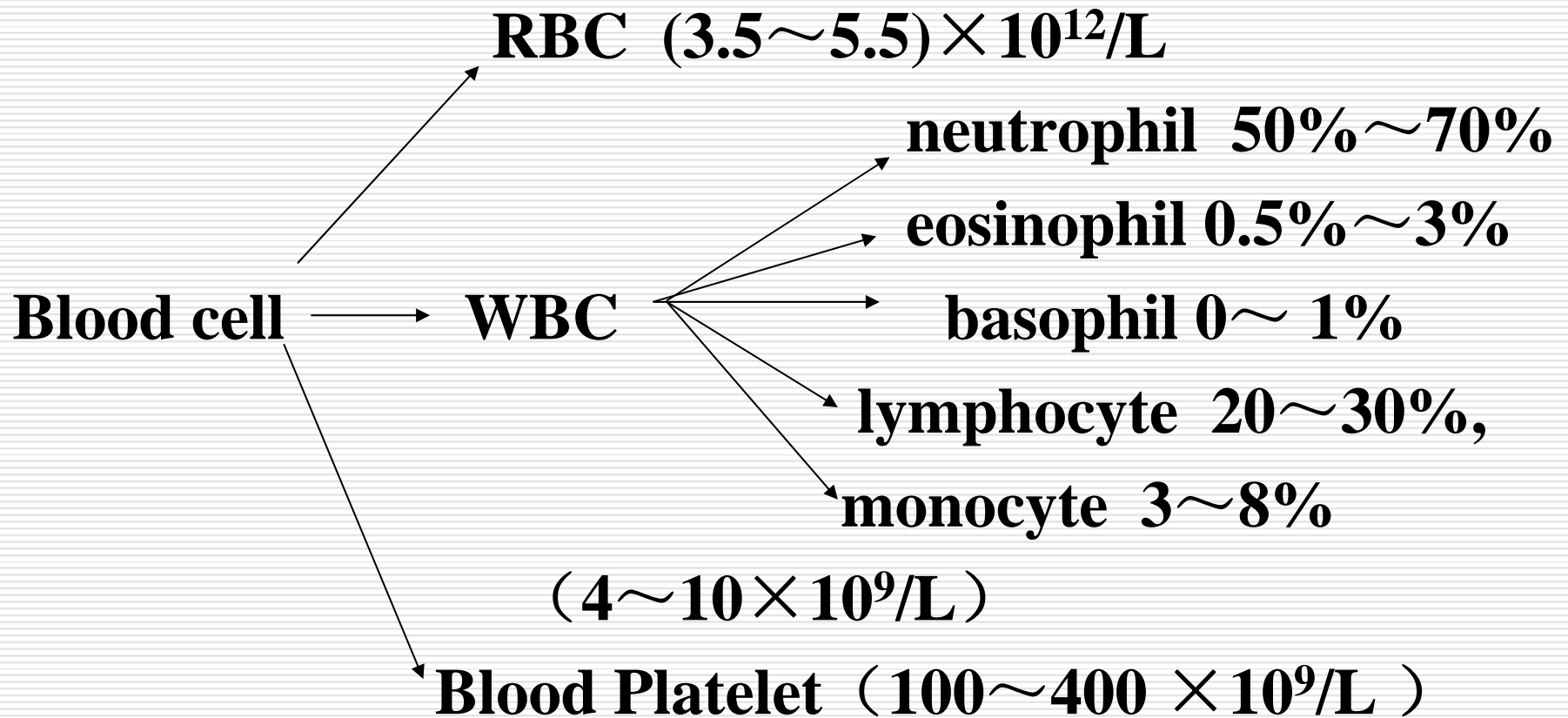
---

**Organization:**  
**blood cell**  
**Plasma:**  
**Serum:**  
**Function:**



# Classification of blood cell

---

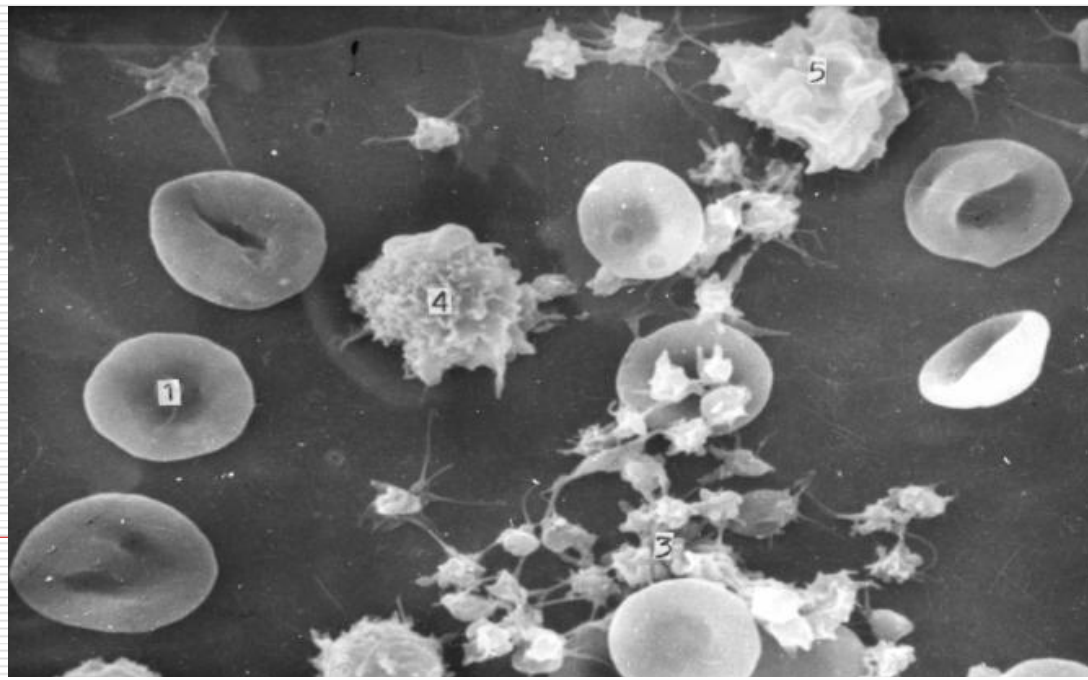
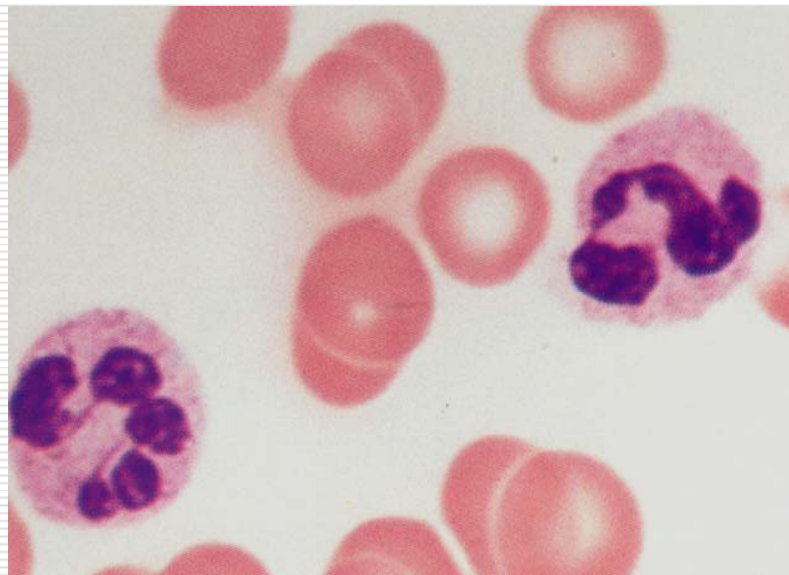


# 1. Erythrocyte (red blood cell)

**7.5-8.5  $\mu$  m, biconcave disk shape**

**without nuclei and organelles**

**hemoglobin (Hb) :100-120g/L**



# 1. Erythrocyte

---

**Characters:**

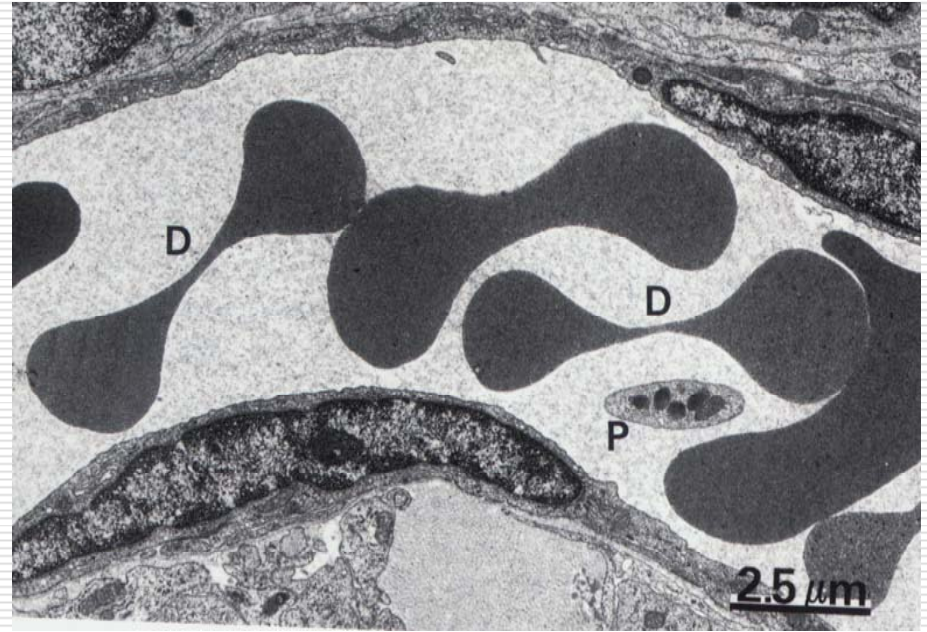
① **plasticity**

**spectrin and actin  
(cytoskeleton)**

② **ABO blood type antigen**

**hemolysis ghost**

---



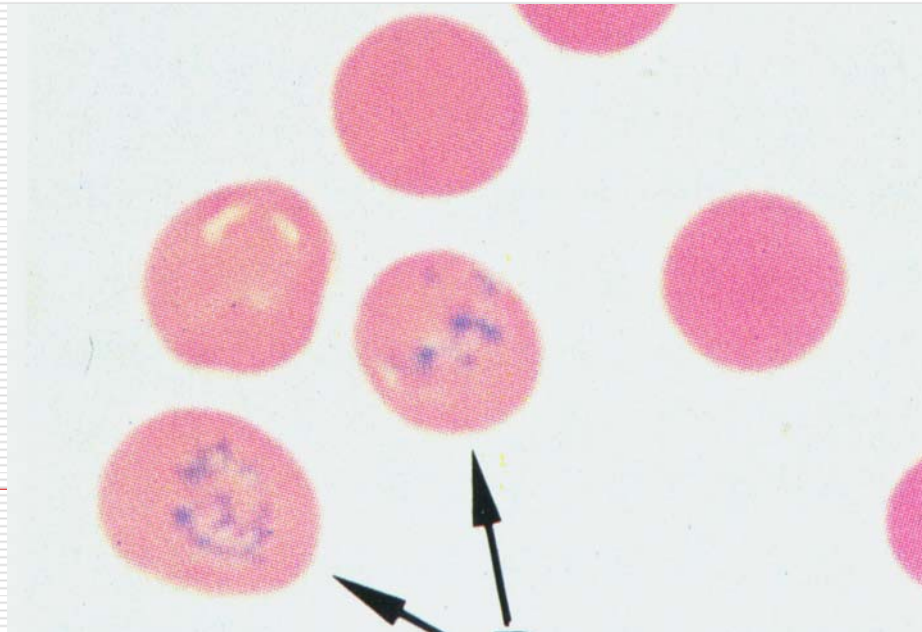
# Reticulocyte:

---

residual ribosome

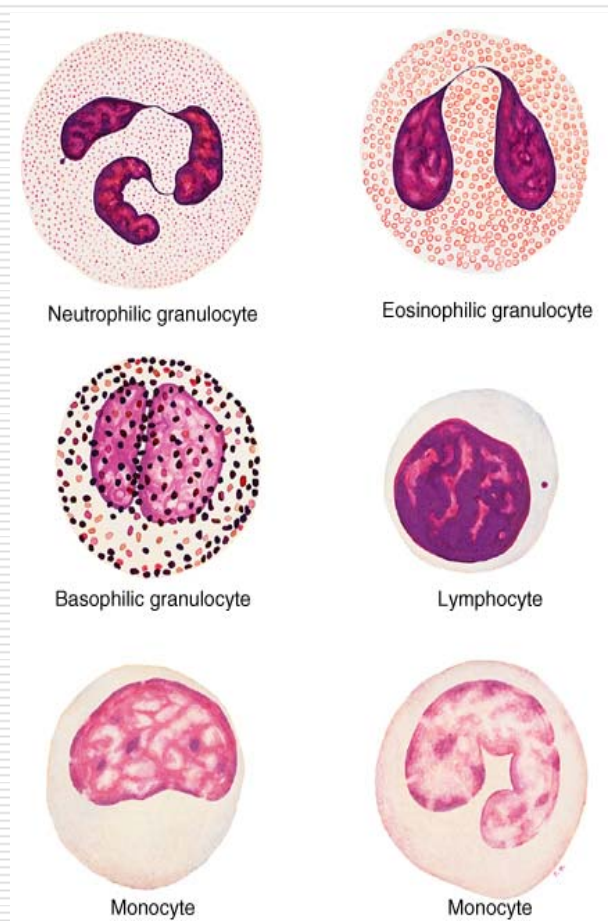
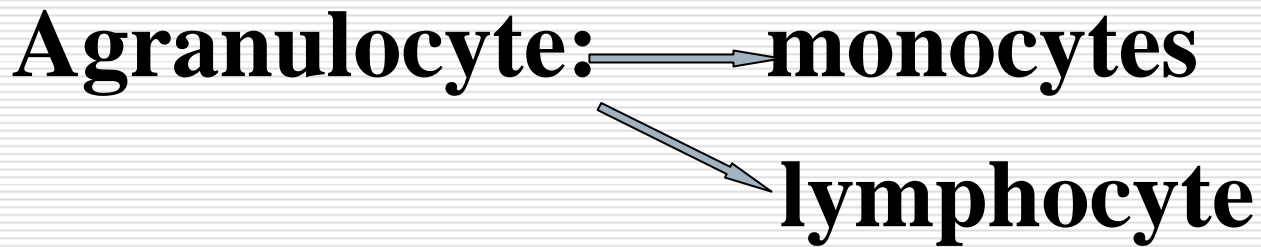
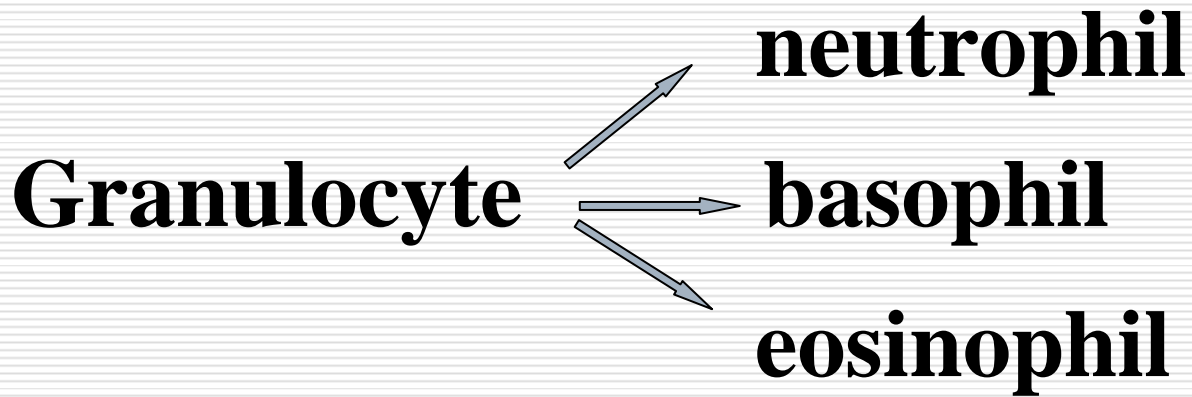
Percent: Adult 0.5% ~ 1.0% , 3%-6%

Lifespan: 120 days



# 2. Leukocyte (white blood cell)

## Classification of leukocyte





# **(1) Neutrophil**

---

**sphere shape (10~12  $\mu$  m)**

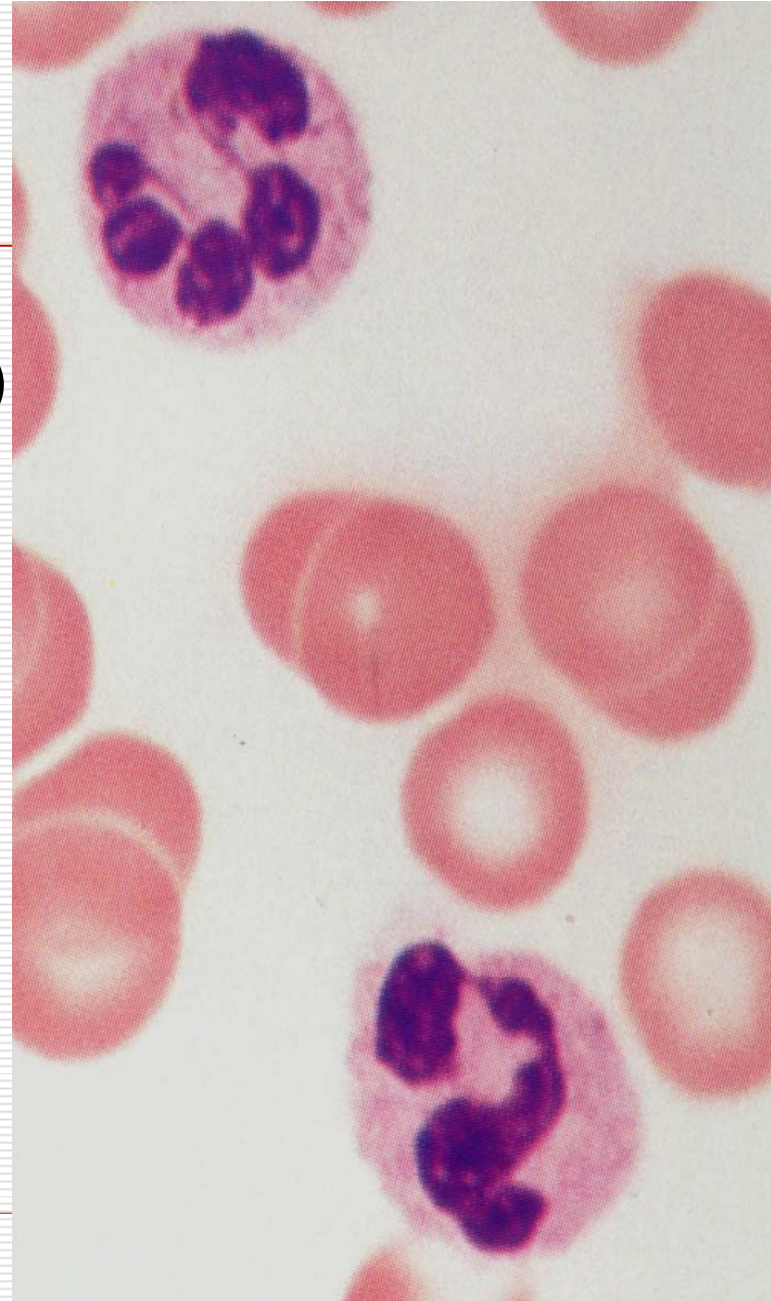
**2 ~ 5 lobes of nucleus**

**pink-staining cytoplasm**

**containing fine granules**

**Percent: 50%~70%**

---





# (1) Neutrophil

---

**EM:**

① azurophilic granules (lysosome)

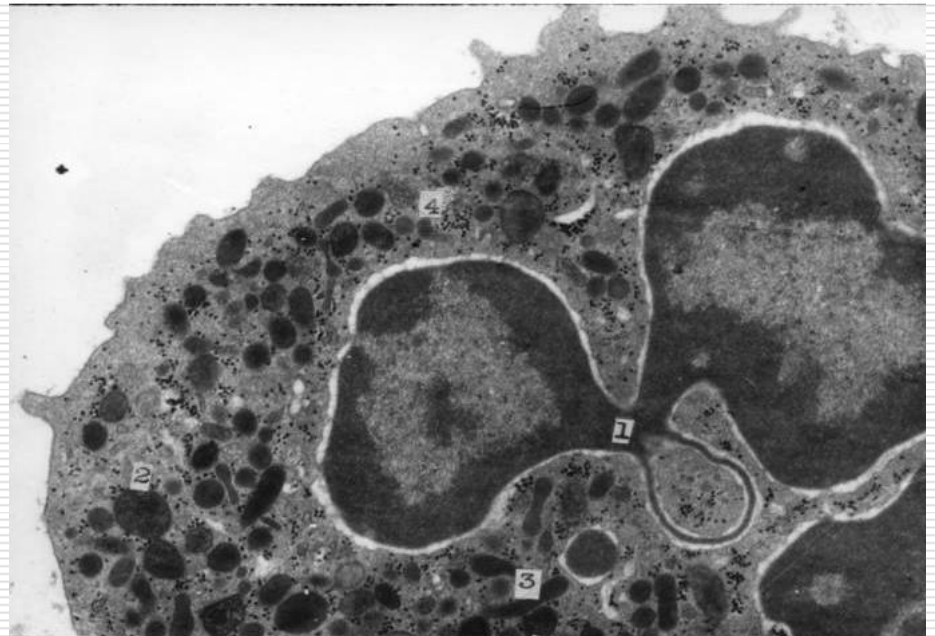
② specific granules

**Function:**

**Lifespan: 1~3 days**

**Nucleus left migration**

**Nucleus right migration**



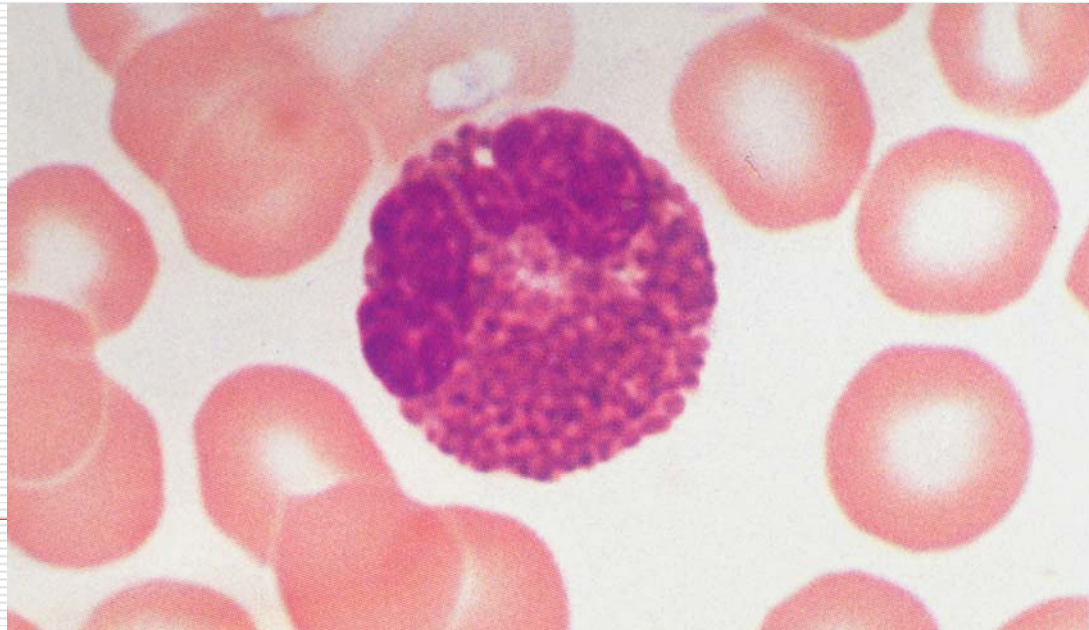
## **(2) eosinophil**

---

**sphere shape (10~15  $\mu$  m),**

**two lobes of nucleus**

**cytoplasm filled with eosinophilic granules**



## **(2) eosinophil (EM)**

---

**The granules surrounded by a unit membrane**

**An elongated crystalloid core inside**

**containing histaminase and arylsulfatase**

**Function:**

**Lifespan:**

**8~12 days**



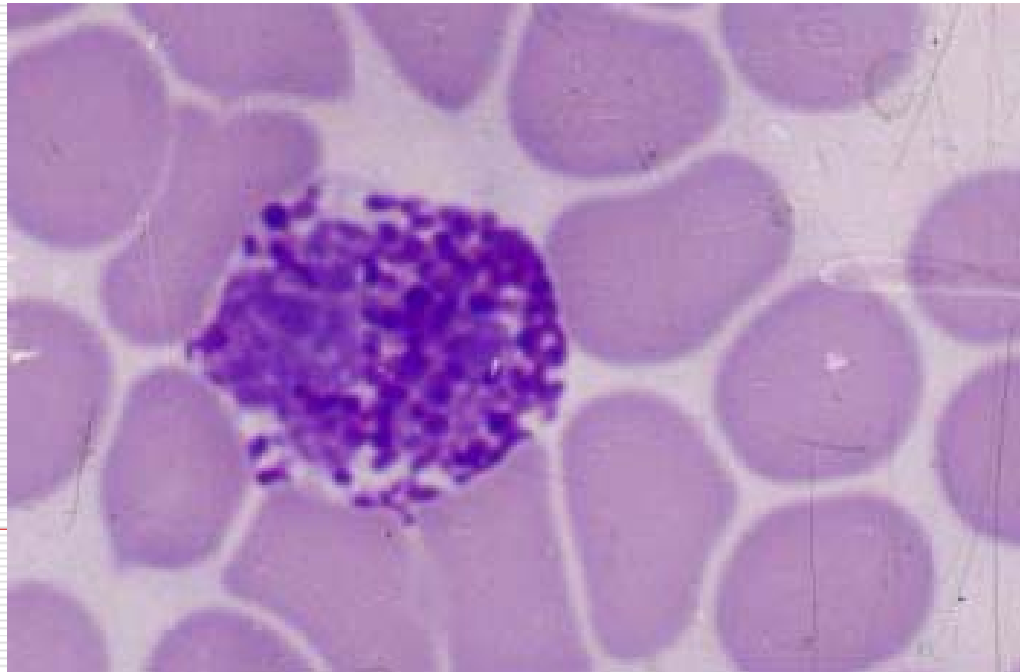
## **(3) basophil**

---

**sphere shape (10~12  $\mu$  m),**

**S-shaped irregular nucleus,**

**large basophilic granules in cytoplasm**



## **(3) basophil(EM)**

---

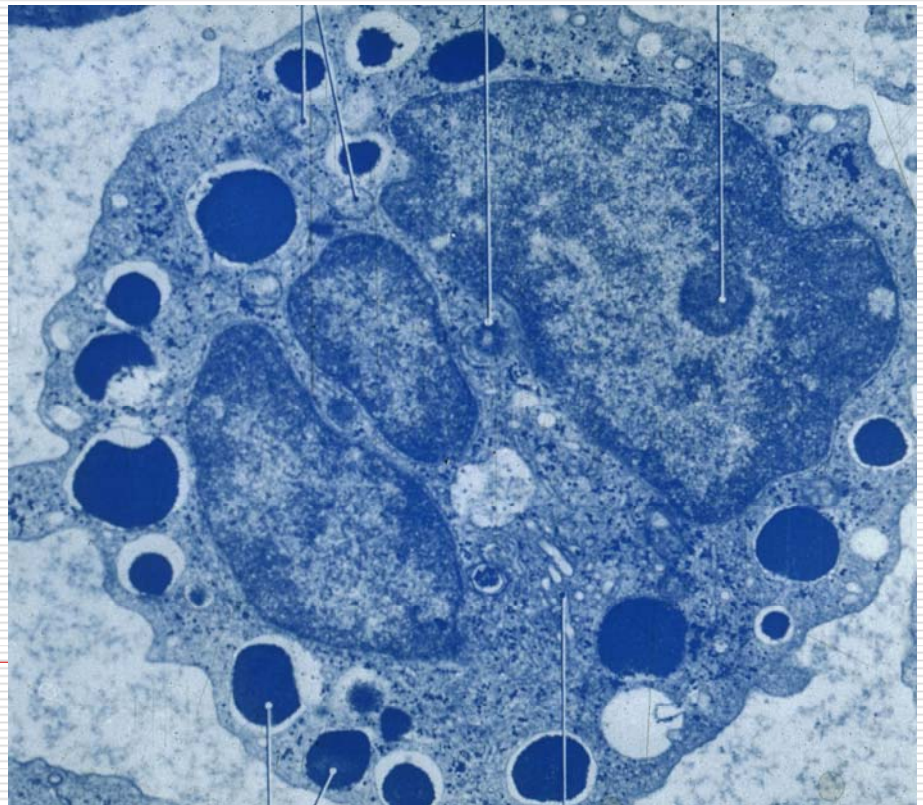
**the granules bounded by a membrane,  
containing heparin, histamine and  
leukotrienes**

**Function:**

**Lifespan:**

**12~15 days**

---





## **(4) lymphocyte**

---

**small, medium and large kinds of cell,**

**sphere shape**

**basophilic cytoplasm**

**spherical nucleus**

**condensed chromatin**





# (4) lymphocyte(EM)

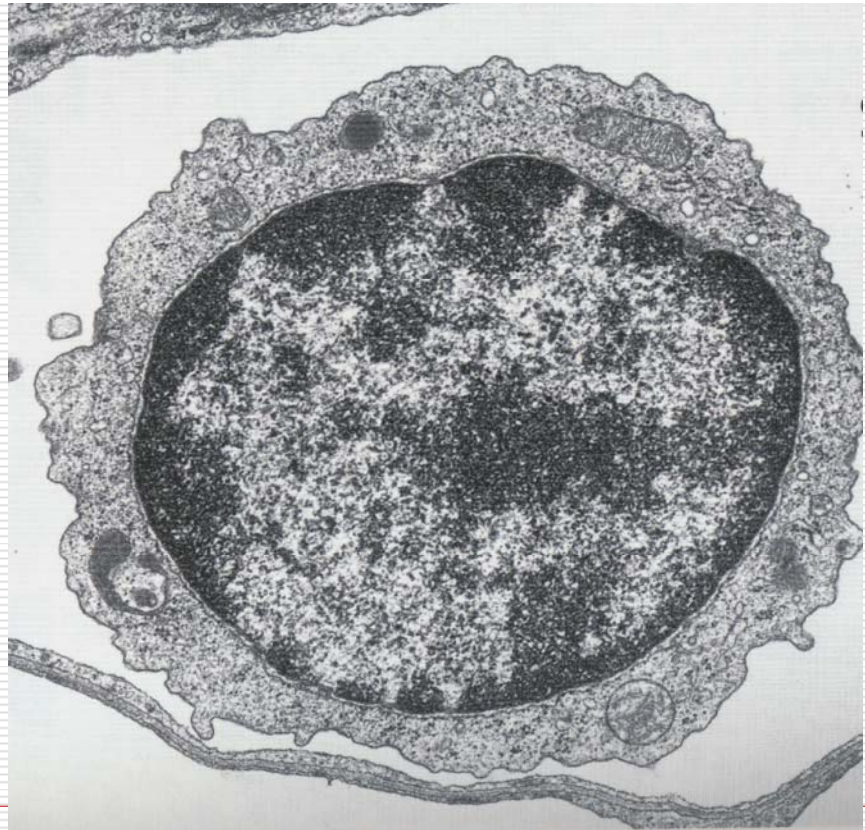
---

**azurophilic granules**

**few organelles**

**free ribosomes**

**Function:**



## **(5) Monocyte**

---

**oval shape (14~20  $\mu$  m)**

**horseshoe, or kidney-shaped nucleus**

**basophilic cytoplasm**



## **(5) Monocyte(EM)**

---

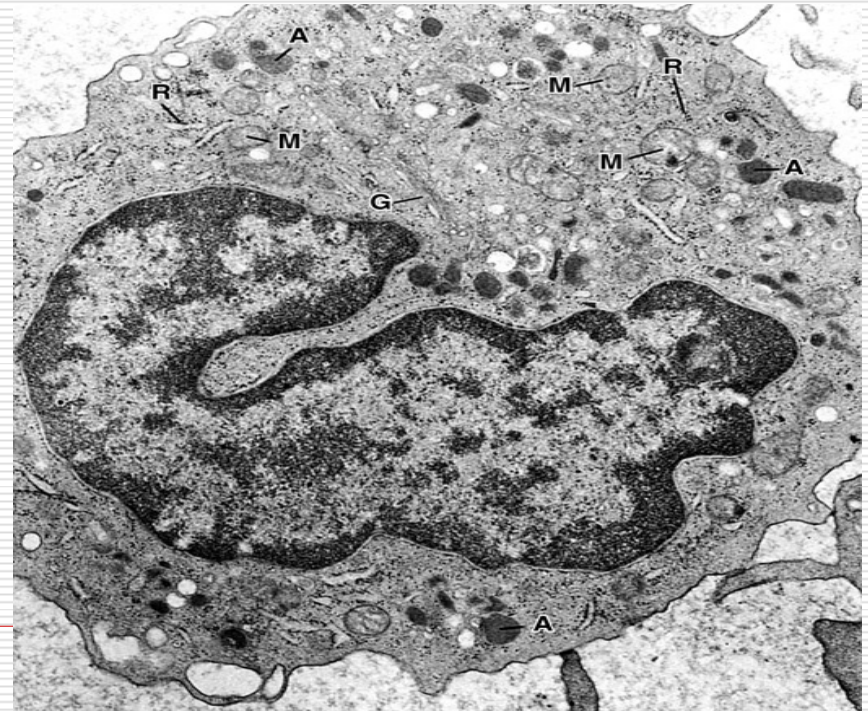
**many fine azurophilic granules**  
**some rough ER, few free ribosomes**

**Function:**

**Lifespan:**

**2 months or more**

---



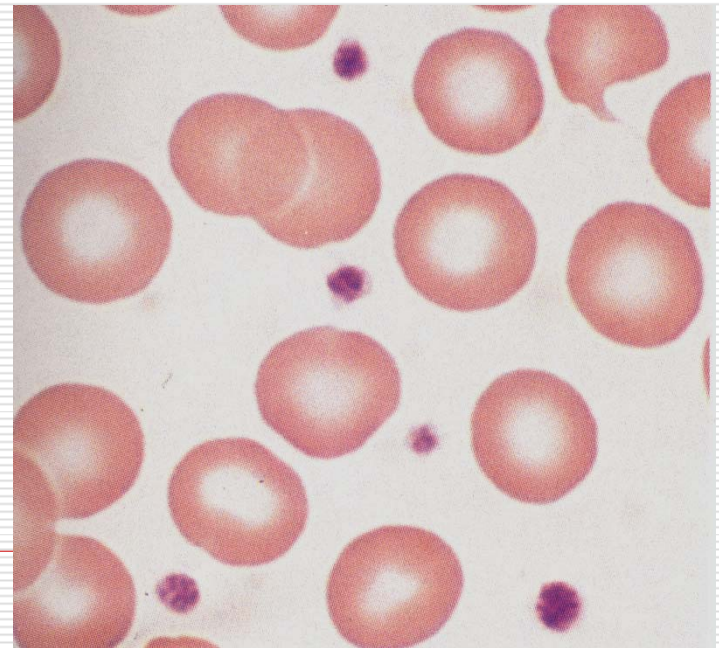
# 3. Blood platelet

---

**Origin:**

**cell fragments anucleated by cytoplasm of  
megakaryocyte in the bone marrow**

**basophilic cytoplasm  
including granulomere  
and hyalomere**





# 3. Blood platelet(EM)

---

open canalicular system

dense tubular system (granulomere)

microfilament and microtubules (hyalomere)

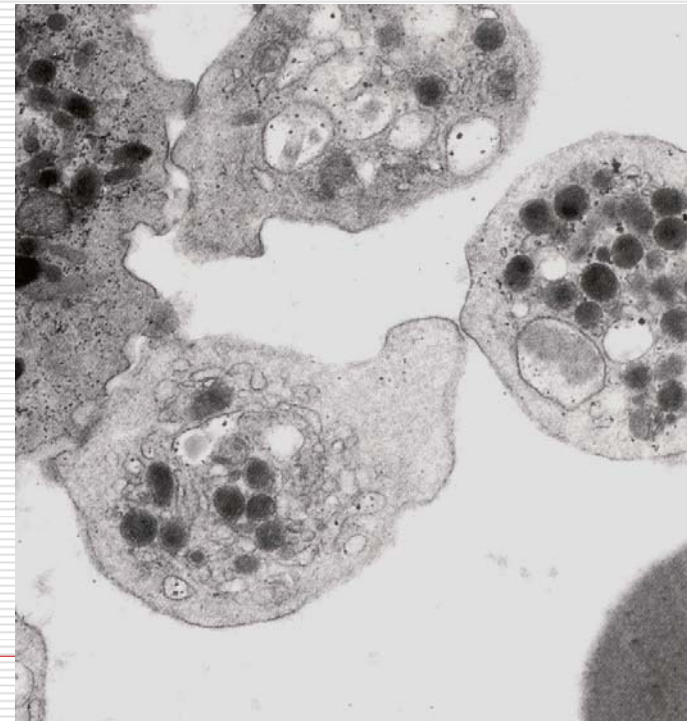
specific granule

dense granule,

containing ATP、ADP、5-HT、Ca

Lifespan: 7~14 days

$<50 \times 10^9/L$  : bleeding



# III. Hemopoietic organ and hemopoiesis

---

**1. Hemopoietic organ: yolk sac  $\longrightarrow$  liver**

**$\longrightarrow$  spleen  $\longrightarrow$  thymus  $\longrightarrow$  bone marrow**

- Erythrocyte system, granulocyte system, monocyte system and megakaryocyte-blood platelet system**
  - lymphoid tissue and organ  $\longrightarrow$  lymphocyte**
-



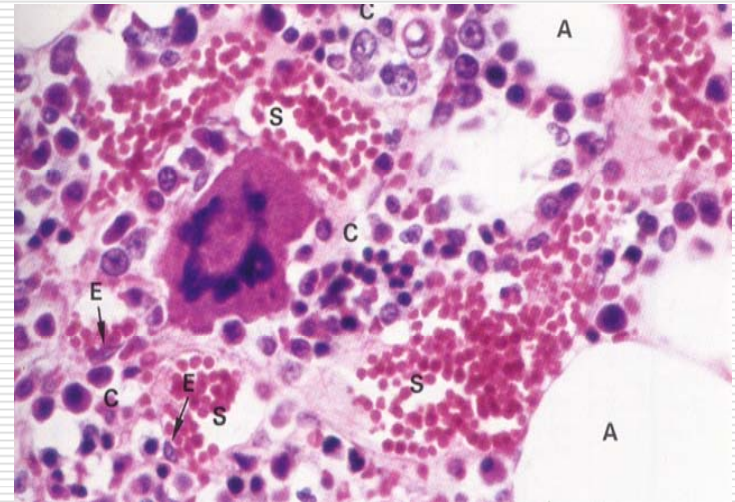
## 2. The structure of the bone marrow

---

### 2.1 Hemopoietic tissues

reticular tissue, hemopoietic cell and matrix cell

matrix cell {  
macrophage  
fibroblast  
fat cell  
mesenchymal cell



### 2.2 Blood sinus

---

## **2.3 Hemopoietic inductive microenvironments, HIM**

---

**(1) Nerve**

**(2) Microvasculus**

**(3) Fibers**

**(4) Ground substances**

**(5) Hemapoietic stromal cell**

**fibroblast**

**macrophage**

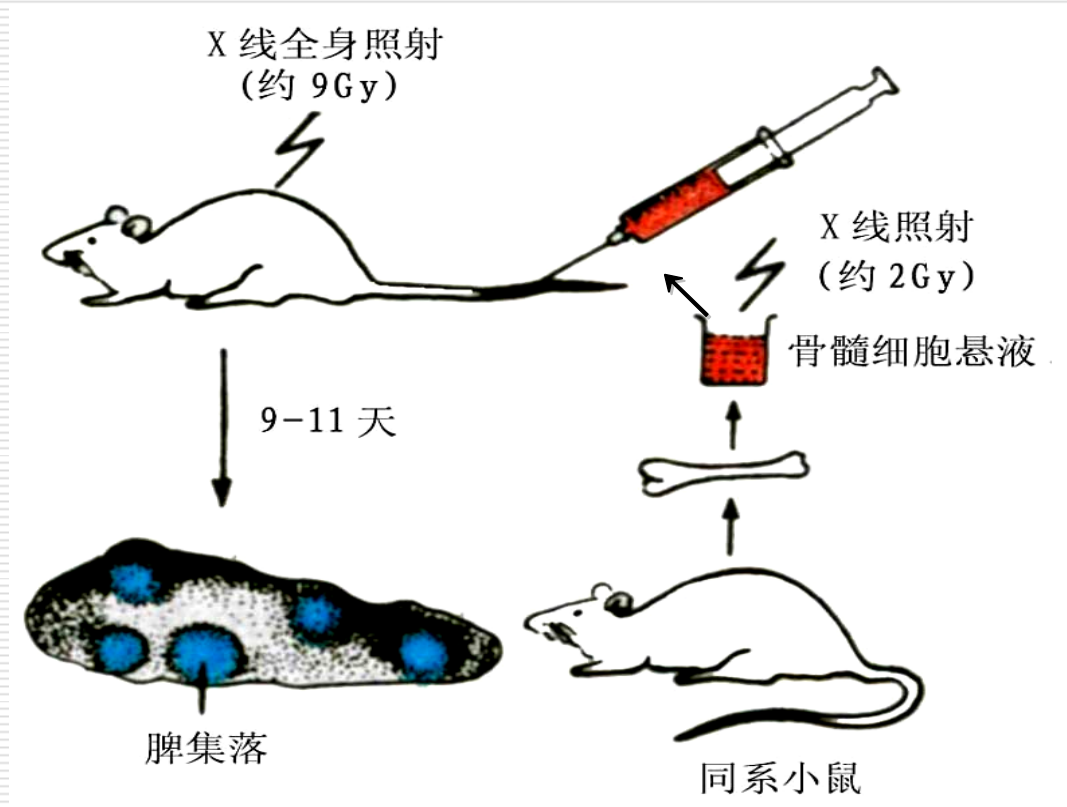
**endothelial cell**

**reticular cell**

**fat cells**

---

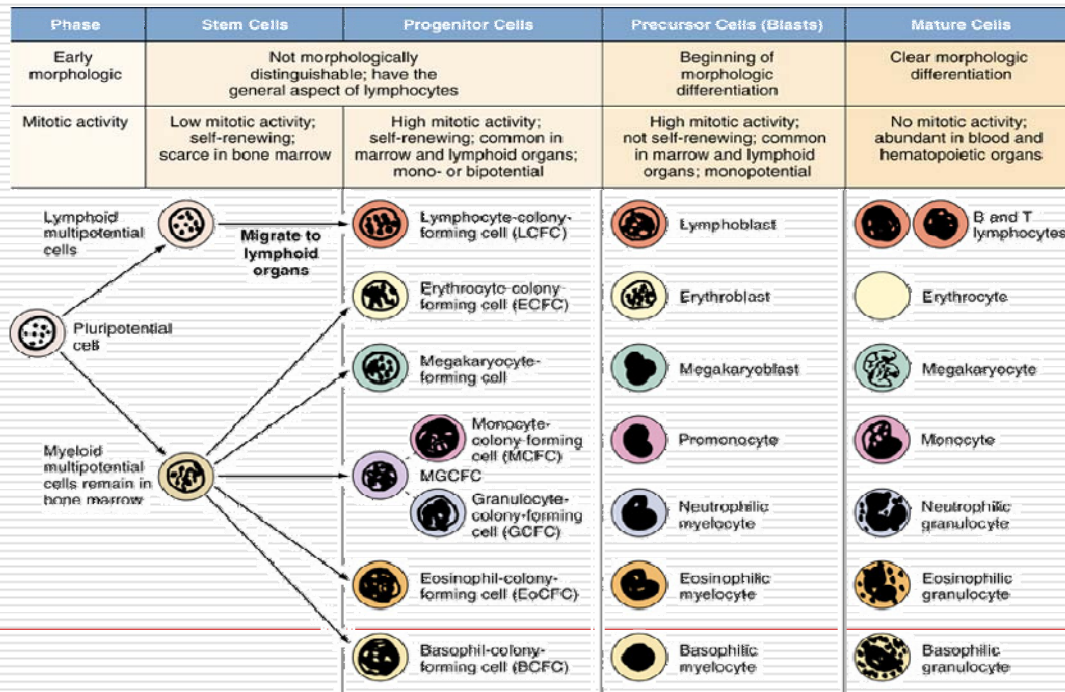
# 3. Hemopoietic Stem Cell



# 3. Hemopoietic Stem Cell

## (1) Hemopoietic Stem Cells

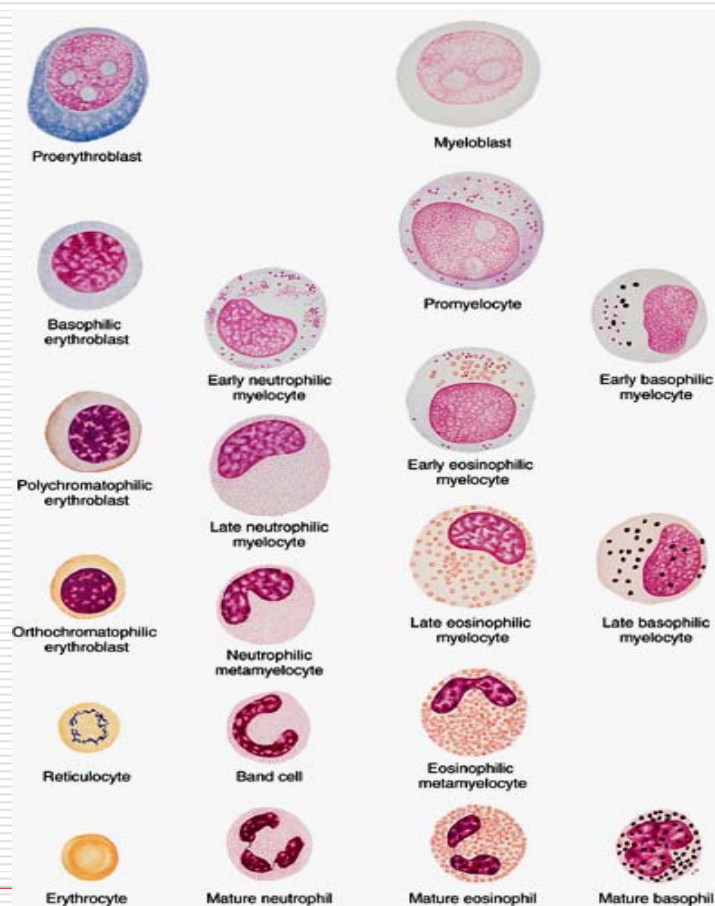
## (2) Hemopoietic Progenitor cell



# 4. Morphous Evolution During Hemopoiesis

---

General pattern:



# 4.1 Erythropoiesis



Proerythroblast



Basophilic erythroblast



Polychromatophilic erythroblast



Orthochromatophilic erythroblast



Reticulocyte



Erythrocyte

proerythroblasts

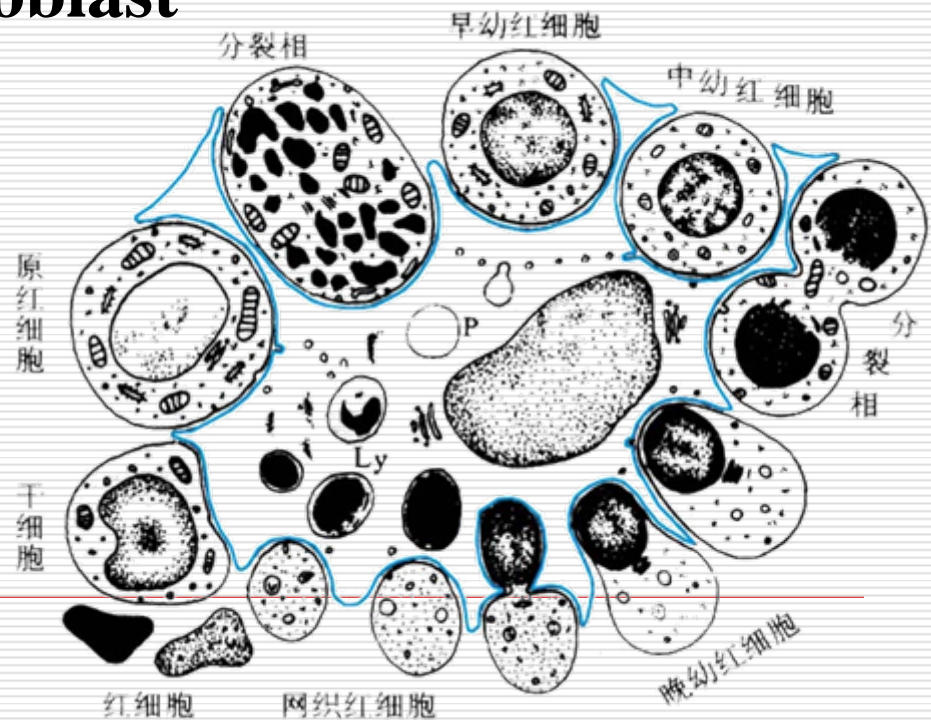
early erythroblast

intermediate erythroblast

late erythroblast

reticulocyte

erythrocyte



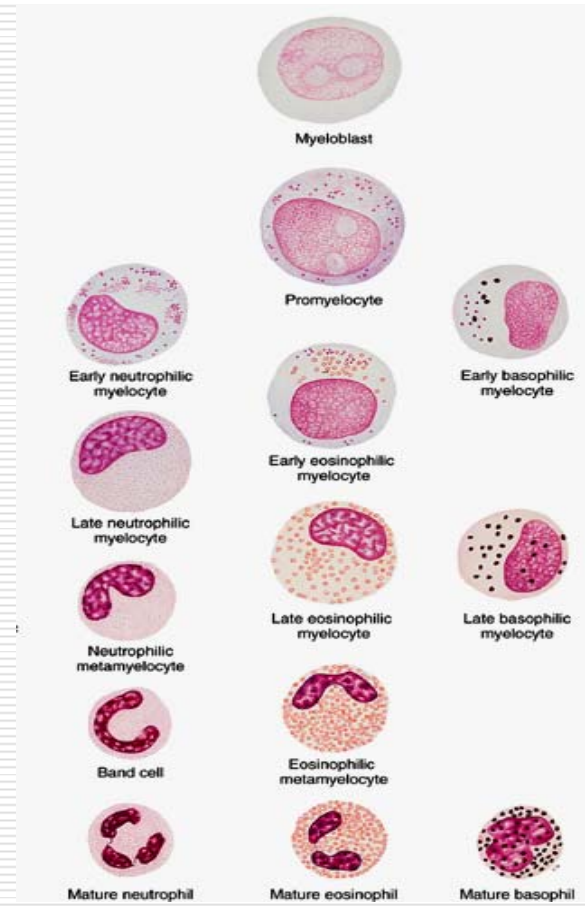
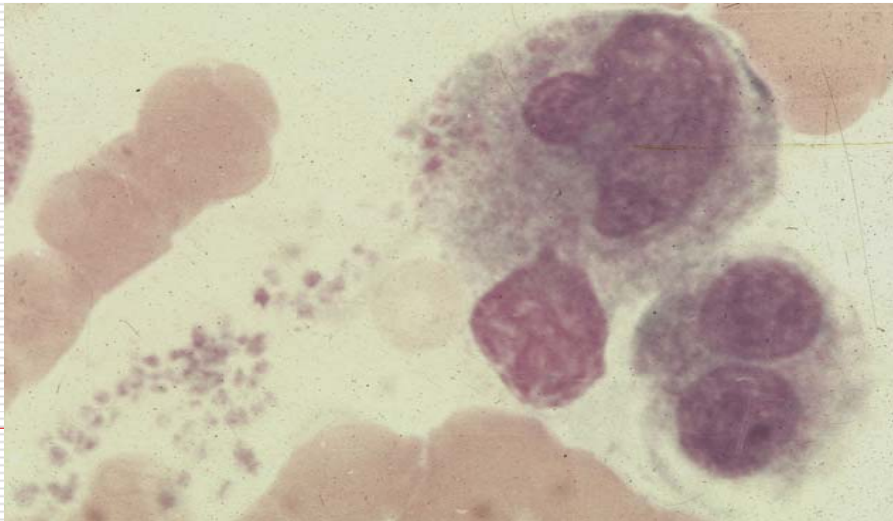


## 4.2 Granulocytopoiesis

## 4.3 Monocytopoiesis

## 4.4 Thrombocytopoiesis

## 4.5 Lymphocytopoiesis



# WBC of model (LM)

---



Neutrophilic granulocyte



Eosinophilic granulocyte



Basophilic granulocyte



Lymphocyte



Monocyte



Monocyte

